

Salinas River

Long-Term Management Plan

Welcome!

Thank you for attending
Public Meeting #1

“The Salinas Valley is in Northern California. It is a long narrow swale between two ranges of mountains, and the Salinas River winds and twists up the center until it falls at last into the Monterey Bay.”

John Steinbeck



Today's Agenda

- Welcome and Introductions
- Presentations and Discussions
 - Salinas River Long-Term Management Plan
 - Elizabeth Krafft, MCWRA and Kathryn Gaffney, ICF
 - Stakeholder Issue Assessment and Recommendations
 - Gina Bartlett, CBI
 - Wrap – up/Next Steps



What is a SR long-term management plan?

- Geographically focused
- Involves all stakeholders
- Community based
- Integrates multiple programs (regulatory and voluntary)
- Guidance document
- Presents multiple options
- Foundation for future regulatory agreements



What's not a SR long-term management plan?

- Doesn't "belong" to one organization
- Not a regulatory document
- Not subject to CEQA
- Does not change local land use authority or rules
- Not a state or federal permit



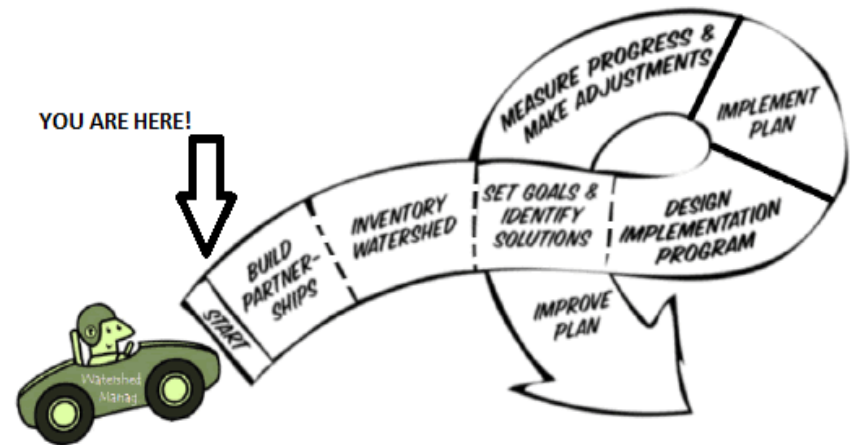
Why are we doing a LTMP?

- Look at the Salinas River in a broad sense
- Look at actions and opportunities as part of the whole
- Build context of Salinas River in one place
 - Include current and future activities
 - Agency facilities and operations
 - Existing and planned projects
 - SMP
 - Lagoon
 - Groundwater Sustainability Plan
 - PureWater Monterey
 - Salinas Watershed Invasive Non-Native Plant Program



How is a Long-Term Management Plan built?

- Iterative process that includes:
 - Planning
 - Identify issues of concern
 - Set preliminary goals
 - Characterization of the area
 - Goals/ID solutions
 - Design Implementation Plan



What will the plan include?

- Historical and Baseline Conditions
 - Location
 - Climate
 - Land use
 - Etc.
- Long-term management goals and actions
 - Strategies for multi-benefit lagoon management
 - Effective SMP implementation
 - Etc.
- Implementation strategies
 - Collaboration and information sharing
 - Funding sources
 - Etc.



How did we get here?

- MCWRA held a series of public meetings in 2013 to explore ideas on how to develop a LTMP
 - MCWRA cannot “go it alone”
 - Wanted a local process
 - Recommended community engagement process led by professional facilitator



How did we get here?

- Salinas River Stream Maintenance Program permitted in 2016 for up to 10 years
 - With a 5 yr. review to evaluate effectiveness
- MCWRA recognized need for a long-term management plan that includes stream maintenance and lagoon management



Who is going to help?

- Monterey County residents, landowners, interested parties
- Local Organizations including:
 - Monterey County Water Resources Agency
 - Salinas Valley Groundwater Sustainability Agency
 - River Management Unit Association
 - Grower-Shipper Assoc. of Central California
 - Resource Conservation District of Monterey Co.
 - Central Coast Wetlands Group
 - Trout Unlimited
 - Others?



Who is going to help?

- California State Coastal Conservancy
- Regulatory and permitting agencies, including:
 - National Marine Fisheries Service
 - US Fish and Wildlife Service
 - Central Coast Regional Water Quality Control Board
 - CA Department of Fish and Wildlife
 - CA Coastal Commission



Who is going to help?

- Consultant Team
 - Consensus Building Institute
 - ICF
 - FISHBIO
 - Geosyntec
 - FlowWest
 - Wood (formerly Amec Foster Wheeler)
 - M. Cubed



Salinas River

Long-Term Management Plan

Draft plan boundaries

Initial draft map depicting:

Study area (large)

- Informed by a watershed approach

Management Area (smaller)

- Area where most recommended strategies and projects will be implemented

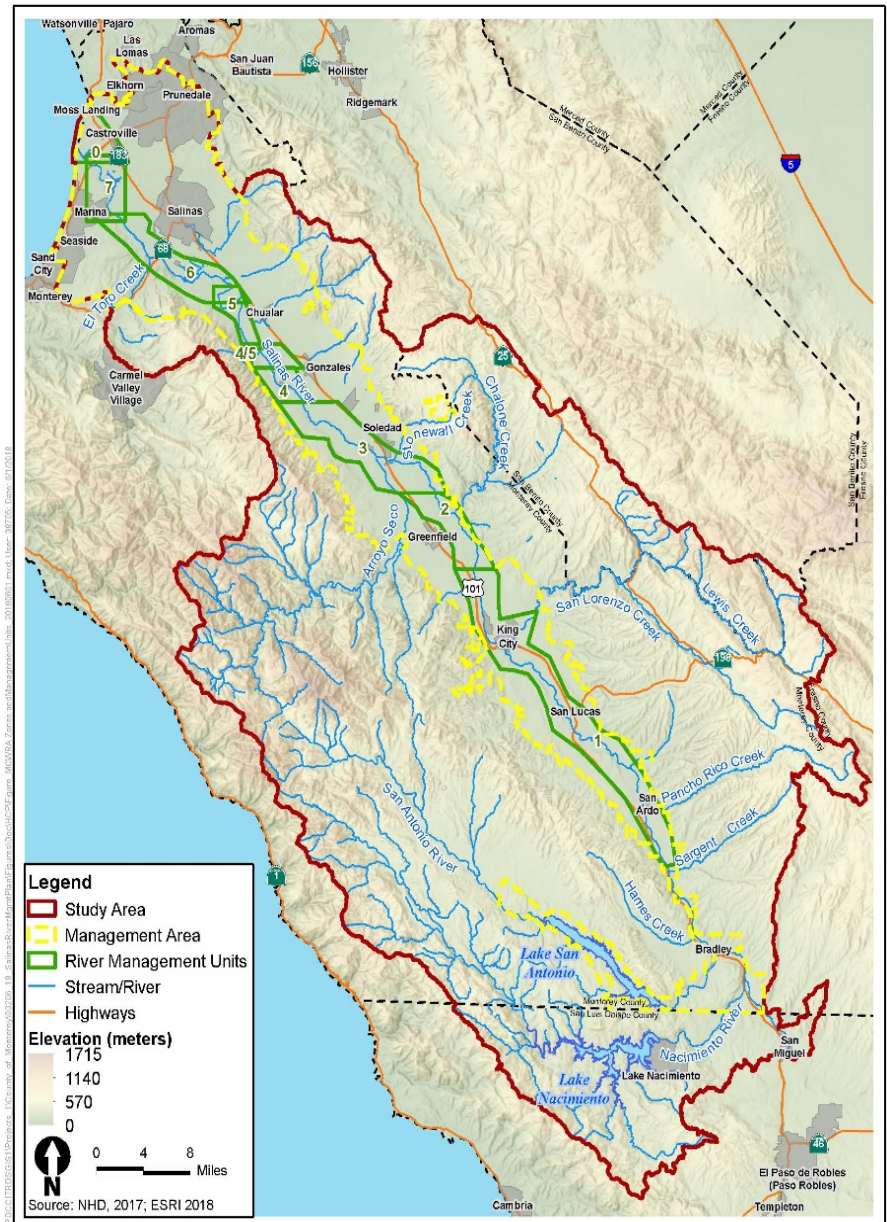


Figure 1
DRAFT Salinas River Long-Term Management Plan Study Area
and Management Area Boundaries

How does a Habitat Conservation Plan fit?

- MCWRA operations and maintenance activities needs coverage under the Endangered Species Act (ESA) for:
 - Steelhead trout
 - Tidewater goby
 - Western snowy plover
 - Others to be determined
- HCP is component of an application to Federal regulatory agencies for permit under the ESA



How does a Habitat Conservation Plan fit?

- LTMP is Phase 1 of a phased project
- LTMP foundation for HCP due to information overlap such as:
 - Historic and Baseline conditions
 - Stakeholder Engagement and Participation
 - Long-term Management Strategies



Salinas River

Long-Term Management Plan

LTMP vs. HCP

	LTMP	Habitat Conservation Plan
Regulatory Document?	No	Yes
Who will implement?	Various entities	MCWRA
Implementation mandatory?	No	Yes
Subject to CEQA/NEPA?	No	Yes
Who “owns”	Community	MCWRA
Secure funding required?	No	Yes
Who “approves”?	No “approval” necessary	Agency BOS/BOD; Regulatory agencies
Expiration date?	None	TBD estimate 15-30 years



LTMP Schedule

- Stakeholder participation: On-going
- Data gathering: Now to September/October
- Plan development: September - December
- Public document available - January 2019



QUESTIONS?

